



ULTIMATE
LIFTING SOLUTIONS

WWW.ULSLIFTING.COM



The Powermat is a heavy duty, high-pressure lifting bag designed primarily for lifting vehicles and objects in emergency situations. Deflated, the Powermat has a very slim profile making it suitable for use in restricted or awkward spaces and compact to store. Available in 13 standard sizes with maximum lifting capacities from 1 tonne right up to 68 tonne.

Powermats inflate rapidly offering instant lift. The most convenient source of air supply for inflation is a BA cylinder or SCUBA bottle, alternatively a compressor, factory airline supply or a truck air brake supply can be used.

Due to their rapid response capability Powermat high-pressure lifting bags are ideally suited to emergency rescue situations, however they are an exceptionally versatile piece of equipment that also has applications in urban search and rescue, industry, mining, railroad construction/maintenance and the armed forces.

FEATURES

- Slimline profile when deflated making it suitable for use in restricted or awkward places
- Inflates rapidly offering and instant lift
- Have a controlled deflation facility if required
- Large lift capacity and height

USED FOR

- Road traffic incidents
- Light aircraft crash
- Rapid response rescue
- Raising submerged vehicles and small craft

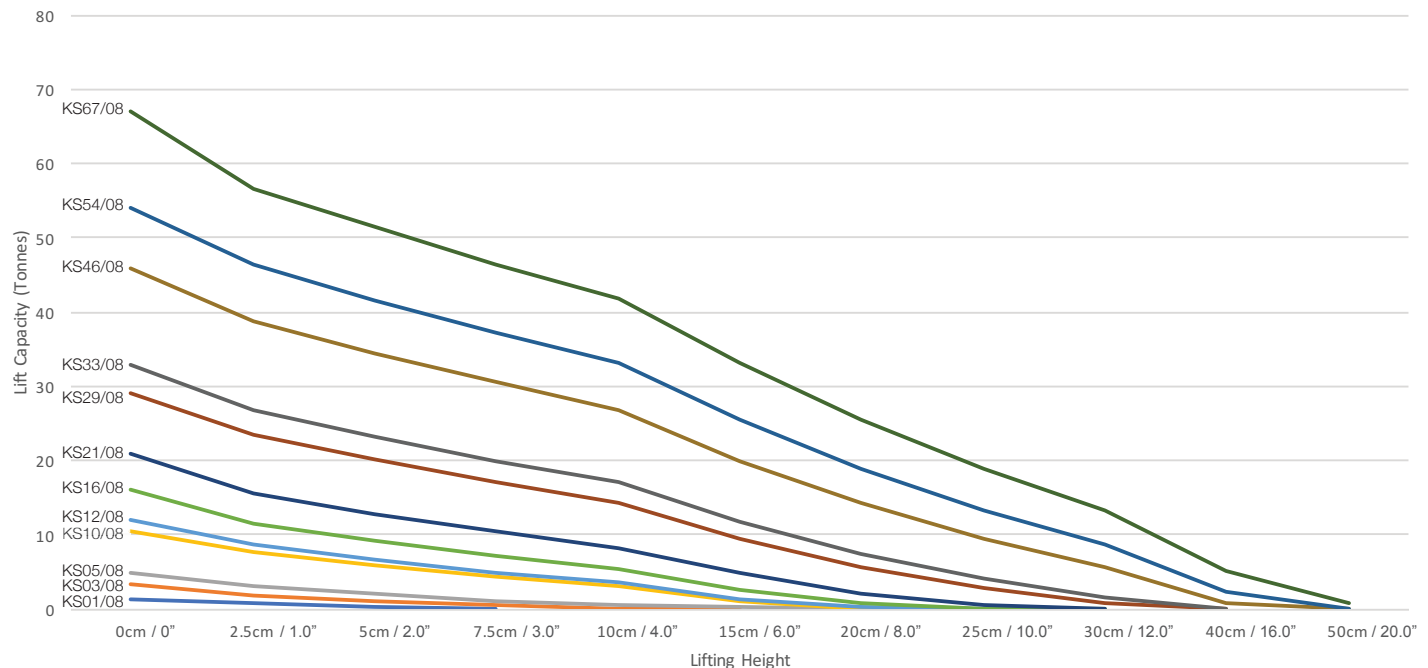
COMPLIES WITH

- EN 13731:2007 (independently tested)



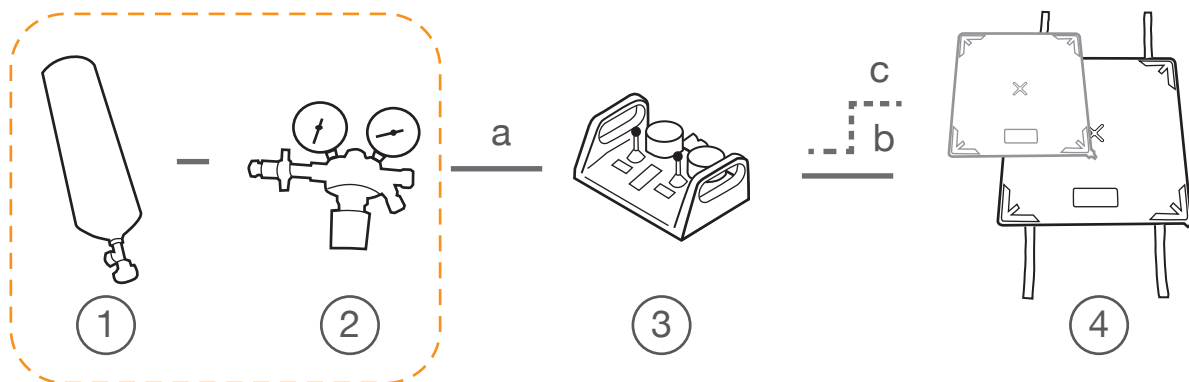
Technical Data	KS1	KS3	KS5	KS10	KS12	KS16	KS21	KS29	KS33	KS46	KS54	KS67
Product Code	KS01/08	KS03/08	KS05/08	KS10/08	KS12/08	KS16/08	KS21/08	KS29/08	KS33/08	KS46/08	KS54/08	KS67/08
Length (cm / inch)	15 / 5.9"	22.5 / 8.6"	27 / 10.6"	38 / 15.0"	40.8 / 16.1"	46 / 18.1"	52 / 20.4"	62 / 24.4"	65.8 / 25.9"	77.5 / 30.5"	84 / 33.1"	92 / 36.2"
Width (cm / inch)	15 / 5.9"	22.5 / 8.6"	27 / 10.6"	38 / 15.0"	40.8 / 16.1"	46 / 18.1"	52 / 20.4"	62 / 24.4"	65.8 / 25.9"	77.5 / 30.5"	84 / 33.1"	92 / 36.2"
Inflated height (cm / inch)	8 / 3.1"	13 / 5.1"	16 / 6.3"	23 / 9.0"	25 / 9.8"	28 / 11.0"	32 / 12.6"	38 / 15"	41 / 16.1"	48 / 18.9"	52 / 20.5"	57 / 22.4"
Deflated height (cm / inch)	2.5 / 1"	2.5 / 1"	2.5 / 1"	2.5 / 1"	2.5 / 1"	2.5 / 1"	2.5 / 1"	2.5 / 1"	2.5 / 1"	2.5 / 1"	2.5 / 1"	2.5 / 1"
Maximum lift (tonne / US ton)	1.4 / 1.5	3.4 / 3.7	5.0 / 5.5	10.4 / 11.5	12.0 / 13.2	15.5 / 17.1	21.0 / 23.1	28.8 / 31.7	32.6 / 35.9	45.6 / 50.3	53.8 / 59.3	67 / 73.9
Air capacity at 8 bar (litr / ft ³)	3 / 0.1	12 / 0.4	23 / 0.8	69 / 2.4	89 / 3.1	124 / 4.4	186 / 6.6	311 / 11.0	391 / 13.8	627 / 22.1	797 / 28.1	1051 / 37.1
Weight (kg / lbs)	0.5 / 1.1	1.3 / 2.9	1.8 / 4.0	3.6 / 7.9	4.1 / 9.0	5.1 / 11.2	8.0 / 17.6	12.0 / 27.0	13.5 / 29.8	14.5 / 32.0	20.0 / 44.1	23 / 50.7
Max. Pressure (bar / psi)	8 / 116	8 / 116	8 / 116	8 / 116	8 / 116	8 / 116	8 / 116	8 / 116	8 / 116	8 / 116	8 / 116	8 / 116

LIFTING HEIGHTS



Lifting capacity Values in US tons are equivalent to the tonne value x 1.1

SYSTEM SCHEMATIC & COMPONENTS



8-Bar Supply

Either from BA cylinder & 8 bar regulator
or a compressor set at 8 bar

*Note: Mats KS01, KS03 and KS05 do not include
carrying/positioning straps due to their smaller size*

SYSTEM COMPONENTS

①



BA Cylinder
(by others)

②



Regulator, 8 Bar
(Regulator only: RE0034,
Regulator & hose: RE0034/001)

Regulators are designed to be used
with an air cylinder to reduce the
amount of pressure which is leaving
the cylinder and entering the inflatable
product. The regulator contains an on/
off valve which stops the air flowing
through the hose.

③

ONE BAG



Single Handheld
Controller
8 bar / 116 psi
CO0074



Single Controller
8 bar / 116 psi
CO0052

TWO BAGS



Twin Handheld
Controller
8 bar / 116 psi
CO0074



Twin Controller
8 bar / 116 psi
CO0055

THREE BAGS



Triple Controller
8 bar / 116 psi
CO0058

MFC's 8 bar aluminium control units are robust and durable with an impact resistant design. The controller features a pressure sensitive 'deadman' control joystick and a pressure gauge with protective rubber surround for each controlled outlet. The body is made of aluminium with plastic protective handles at either end and models are available for control of one, two or three bags. The controller is supplied as standard with a female type 26 inlet coupling and Type 25 female couplings.

The push-button Handheld Controllers are compact and lightweight and can be easily operated with one hand. The aluminium body makes it durable and reduces weight. It is ideal for use with low or high pressure lifting bags. Pressure gauges are recessed into the body for protection and versions are available with either 1 or 2 outlets.

SYSTEM COMPONENTS (CONT.)




Product Code	KS01/08	KS03/08	KS05/08	KS10/08	KS12/08	KS16/08	KS21/08	KS29/08	KS33/08	KS46/08	KS54/08	KS67/08
Length (cm / inch)	15 / 5.9"	22.5 / 8.6"	27 / 10.6"	38 / 15.0"	40.8 / 16.1"	46 / 18.1"	52 / 20.4"	62 / 24.4"	65.8 / 25.9"	77.5 / 30.5"	84 / 33.1"	92 / 36.2"
Inflated height (cm / inch)	8 / 3.1"	13 / 5.1"	16 / 6.3"	23 / 9.0"	25 / 9.8"	28 / 11.0"	32 / 12.6"	38 / 15"	41 / 16.1"	48 / 18.9"	52 / 20.5"	57 / 22.4"
Maximum lift (tonne / US ton)	1.4 / 1.5	3.4 / 3.7	5.0 / 5.5	10.4 / 11.5	12.0 / 13.2	15.5 / 17.1	21.0 / 23.1	28.8 / 31.7	32.6 / 35.9	45.6 / 50.3	53.8 / 59.3	67 / 73.9

Second (Stacked) Powermat - Read down from first bag for second bag code (e.g. KS12/08 & KS05/08)
Note: Total lifting capacity is determined by the smaller bag

Product Code			KS01/08	KS03/08	KS05/08	KS10/08	KS12/08	KS16/08	KS21/08	KS29/08	KS33/08	KS46/08
Maximum lift (tonne / US ton)			1.4 / 1.5	3.4 / 3.7	5.0 / 5.5	10.4 / 11.5	12.0 / 13.2	15.5 / 17.1	21.0 / 23.1	28.8 / 31.7	32.6 / 35.9	45.6 / 50.3


HOSES

a




Inlet Hose [T.26M - T.26M]
(2m - HS-01-04-02-06-06)
(5m - HS-01-04-05-06-06)
(10m - HS-01-04-10-06-06)

b




Green Outlet Hose [S.25M-S.25F]
(5m - HS-01-02-05-06-07)
(10m - HS-01-02-10-06-07)

c



Red Outlet Hose [S.25M-S.25F]
(5m - HS-01-01-05-06-07)
(10m - HS-01-01-10-06-07)

d



Blue Outlet Hose [S.25M-S.25F]
(5m - HS-01-03-05-06-06)
(10m - HS-01-03-10-06-06)

SYSTEM KITS

ONE BAG SYSTEM

Required: **1***, **2***, **3** (choose from one bag controllers), **4** (choose size) and hoses **a** and **b**

TWO BAG SYSTEM

Required: **1***, **2***, **3** (choose from two bag controllers), **4** (x2, choose size/sizes), **5** and hoses **a**, **b**, and **c**

THREE BAG SYSTEM

Required: **1***, **2***, **3** (three bag controller), **4** (x3, choose size), **5** and hoses **a**, **b**, **c** and **d**

N.B. Powermats can only be stacked two bags high and the second bag must be smaller than the first (see table above). In Two and Three bags systems where the bags are the same size, the bags can only be used in parallel (i.e. multiple lift points)
** if not using a compressor*

ACCESSORIES



HP Shut-off Hose
(SP0154)

Inserted between the lifting bag (4) and the outlet hose (b, c or d) the 0.5m yellow shut off-hose incorporates a ball valve which allows the operator to keep the lifting bag inflated and disconnect the outlet hose.

NOTE: it is not recommended to leave a lifting bag disconnected & inflated unless the load is supported by chocks