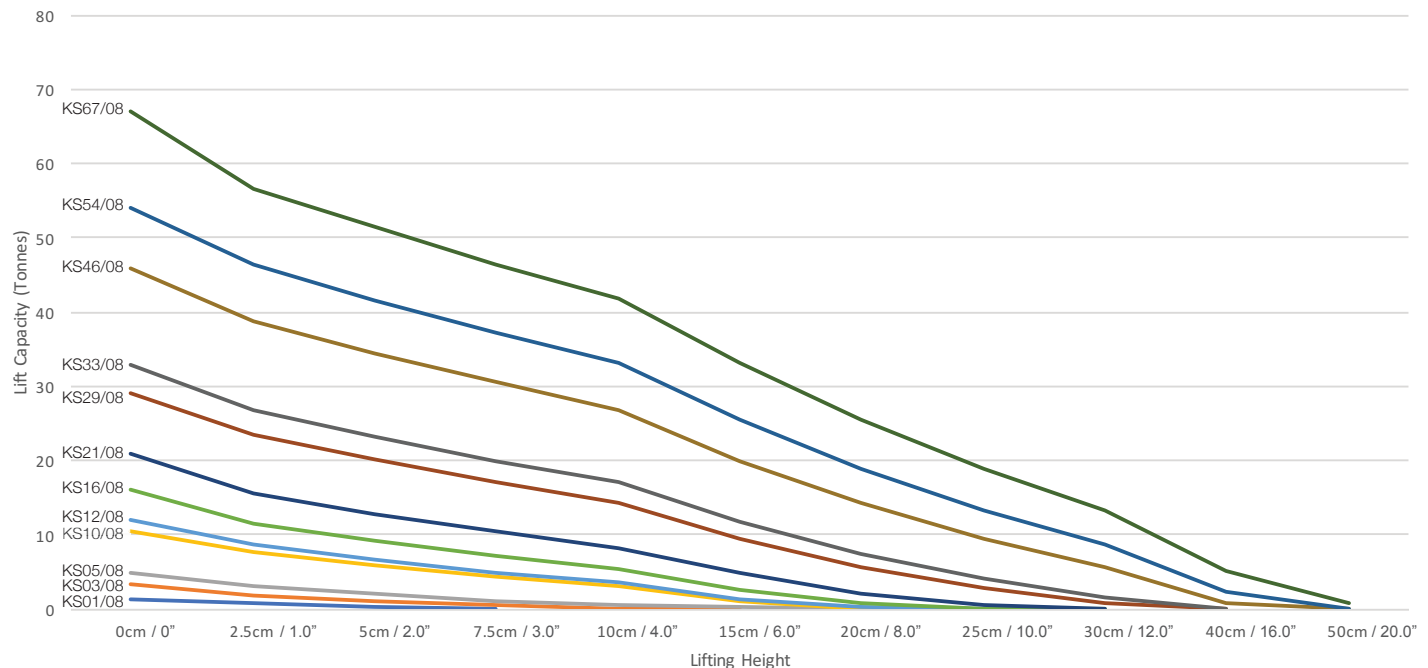




Technical Data	KS1	KS3	KS5	KS10	KS12	KS16	KS21	KS29	KS33	KS46	KS54	KS67
Product Code	KS01/08	KS03/08	KS05/08	KS10/08	KS12/08	KS16/08	KS21/08	KS29/08	KS33/08	KS46/08	KS54/08	KS67/08
Length (cm / inch)	15 / 5.9"	22.5 / 8.6"	27 / 10.6"	38 / 15.0"	40.8 / 16.1"	46 / 18.1"	52 / 20.4"	62 / 24.4"	65.8 / 25.9"	77.5 / 30.5"	84 / 33.1"	92 / 36.2"
Width (cm / inch)	15 / 5.9"	22.5 / 8.6"	27 / 10.6"	38 / 15.0"	40.8 / 16.1"	46 / 18.1"	52 / 20.4"	62 / 24.4"	65.8 / 25.9"	77.5 / 30.5"	84 / 33.1"	92 / 36.2"
Inflated height (cm / inch)	8 / 3.1"	13 / 5.1"	16 / 6.3"	23 / 9.0"	25 / 9.8"	28 / 11.0"	32 / 12.6"	38 / 15"	41 / 16.1"	48 / 18.9"	52 / 20.5"	57 / 22.4"
Deflated height (cm / inch)	2.5 / 1"	2.5 / 1"	2.5 / 1"	2.5 / 1"	2.5 / 1"	2.5 / 1"	2.5 / 1"	2.5 / 1"	2.5 / 1"	2.5 / 1"	2.5 / 1"	2.5 / 1"
Maximum lift (tonne / US ton)	1.4 / 1.5	3.4 / 3.7	5.0 / 5.5	10.4 / 11.5	12.0 / 13.2	15.5 / 17.1	21.0 / 23.1	28.8 / 31.7	32.6 / 35.9	45.6 / 50.3	53.8 / 59.3	67 / 73.9
Air capacity at 8 bar (litr / ft ³)	3 / 0.1	12 / 0.4	23 / 0.8	69 / 2.4	89 / 3.1	124 / 4.4	186 / 6.6	311 / 11.0	391 / 13.8	627 / 22.1	797 / 28.1	1051 / 37.1
Weight (kg / lbs)	0.5 / 1.1	1.3 / 2.9	1.8 / 4.0	3.6 / 7.9	4.1 / 9.0	5.1 / 11.2	8.0 / 17.6	12.0 / 27.0	13.5 / 29.8	14.5 / 32.0	20.0 / 44.1	23 / 50.7
Max. Pressure (bar / psi)	8 / 116	8 / 116	8 / 116	8 / 116	8 / 116	8 / 116	8 / 116	8 / 116	8 / 116	8 / 116	8 / 116	8 / 116

LIFTING HEIGHTS



Lifting capacity Values in US tons are equivalent to the tonne value x 1.1