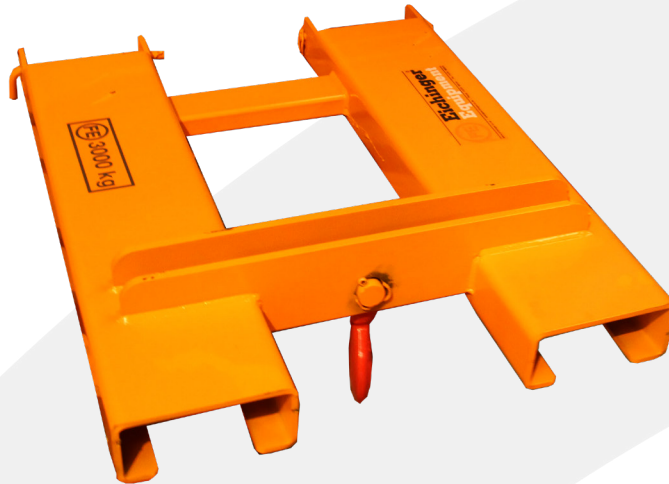


FMH 2084 - FORK MOUNTED HOOK



The fork mounted load hook enables the conversion of any fork lift or telehandler unit into a simple mobile crane unit allowing the lifting of items by chains or slings in a secure and safe manner.

The FMH2084 is secured to the fork lift by a heel pin NOT chain.

Always use the load hook in relation to the load capacity of the fork lift truck

Product Code	Capacity (kg)	Pocket Length (mm)	Pocket Width (mm)	Width (mm)	Max Fork Size (mm)	Weight (kg)
FMH2084.2	2000	940	210	650	160 x 60	45
FMH2084.3	3000	940	210	730	190 x 70	60
FMH2084.5	5000	940	210	730	190 x 70	60

This unit must be used in conjunction with your machines capabilities, please refer to the machine manufacturers guidelines for further information.

Appearance may vary from picture above.

The following instructions must be read and understood by each intended user of this equipment; if there is anything you do not understand contact Ultimate Lifting Solutions Ltd.

Ensure the equipment is adequate for the job you need to carry out.

You must not operate this equipment if you are under the influence of alcohol, drugs or if you are feeling unwell.

A risk assessment should be carried out prior to moving or using this equipment.

The following PPE (Personal protective equipment) should be worn when using this equipment:

Gloves / Goggles / Hard Hat / Steel Toecap boots / Hi-Vis Vest

We also suggest suitable clothing should be worn.

Familiarise yourself with the equipment, its use and how it works!

As this equipment is used at multi-level, ensure the intended area for use is clear of overhead cables and power lines or similar hazards which may affect its safe use. This equipment must always be used in conjunction with your site safety policies.

The work area must be clear of obstructions with adequate space for the operative to work safely around the equipment.

Check and ensure the equipment is inspected and in a safe condition prior to its use. Also ensure that its load is stable and secure.

USING THE EQUIPMENT

Set the forklift's forks to the appropriate width to suite the load hooks fork pockets.

Approach the load hook with the forklift and line the forks up with the fork pockets. Detach the heel pin from the load hook and then insert the forks into the fork pockets ensuring the load hook is mounted as far back on the forks as possible.

Re-attach the heel pins ensuring the assembly goes behind the heel of the fork and so securing the unit to the fork lift.

The forklift load hook is designed to lift and then move loads in a safe manner. Always ensure that the load does not exceed the rating on the load hook and DO NOT drag the load as this will put undue stress on the heel pins.

Raise the load hook and position the safety swivel hook over the lifting point of the load. Lower the hook to a point where the load can be attached safely. Once attached ensure that the gate on the safety swivel hook is fully closed.

Now raise the load and check that the hook is balanced and secure. Once all is okay move the load to the desired location in a smooth and safe manner ensuring that you do not jolt or cause the load to swing. Now lower the load until grounded, lower the hook until you are able to safely release the safety swivel hook from the load.

Once the last load has been moved and the operator is finished with the unit lower it to the ground and release the heel pins. Reverse the forklift out of the fork pockets and clear of the unit and then replace the heel pins ensuring they are available for the next use.

IMPORTANT

ALWAYS REFER TO THE LOAD PLATE ON THE UNIT AND USE IN CONJUNCTION WITH THE FORKLIFT MANUFACTURERS GUIDE LINES

