



Operating Instructions

Translation of original operating instructions

STONE SPLITTER STS Stone Splitter

STS-33 / STS-33-F / STS-43 / STS-43-H / STS-65 / STS-65-H



Bitte beachten Sie, dass das Produkt ohne vorliegende Betriebsanleitung in Landessprache nicht eingesetzt / in Betrieb gesetzt werden darf. Sollten Sie mit der Lieferung des Produkts keine Betriebsanleitung in Ihrer Landessprache erhalten haben, kontaktieren Sie uns bitte. In Länder der EU / EFTA senden wir Ihnen diese kostenlos nach. Für Länder außerhalb der EU / EFTA erstellen wir Ihnen gerne ein Angebot für eine Betriebsanleitung in Landessprache, falls die Übersetzung nicht durch den Händler/Importeur organisiert werden kann.

Please note that the product may not be used / put into operation without these operating instructions in the national language. If you did not receive operating instructions in your national language with the delivery of the product, please contact us. In countries of the EU / EFTA we will send them to you free of charge. For countries outside the EU / EFTA, we will be pleased to provide you with an offer for an operating manual in the national language if the translation cannot be organised by the dealer/importer.

Contents

1 **General..... 3**

2 **Safety 3**

 2.1 Safety symbols 3

 2.2 Safety marking..... 4

 2.3 Accident prevention 4

 2.4 Function Control 5

 2.4.1 General 5

 2.5 Definition skilled worker / specialist 5

 2.6 Authorized use..... 5

3 **Models 5**

4 **Model overview / Technical data 9**

5 **Operation 9**

 5.1 Splitting stones in the middle 9

 5.2 Device operation 9

6 **Maintenance and care10**

 6.1 Maintenance 10

 6.2 Repairs 10

 6.3 Hints to the type plate..... 10

 6.4 Hints to the renting/leasing of PROBST devices 10

1 General



- The device is only designed for the use specified in this documentation.
- Every other use is not authorized and is forbidden!
- All relevant safety regulations, corresponding legal regulations, especially regulations of the declaration of conformity, and additional local health and safety regulations must be observed.



Prior to every operation the user **must** ensure that:

- The equipment is suited to the intended operation
- the functioning and the working condition of the equipment is examined
- the load is suitable to be handled.

Any doubts about instructions should be raised with the manufacturer prior to use.

2 Safety

2.1 Safety symbols



Danger to life!

Identifies imminent hazard. If you do not avoid the hazard, death or severe injury will result.



Hazardous situation!

Identifies a potentially hazardous situation. If you do not avoid the situation, injury or damage to property can result.



Prohibition!


Identifies imminent a prohibition. If you do not avoid the prohibition, death and severe injury, or damage to property will result.




Important informations or useful tips for use.

2.2 Safety marking



WARNING SIGNS

Symbol	Meaning	Order no:	Size [mm]:
	Danger of hands being crushed.	29040220	50

COMMANDMENT SIGNS

Symbol	Meaning	Order no:	Size [mm]:
	Every operator must have read and understood the operating instructions for the unit with the safety instructions.	29040666	50

OPERATING INSTRUCTIONS

Symbol	Meaning	Order no:	Size [mm]:
	Wear eye protection	29040871	50
	Danger of hands being crushed by the cutting blade	29040870	50

2.3 Accident prevention



- Secure the working area for unauthorised persons, especially children.
- Caution during thunderstorms - danger from lightning! Depending on the intensity of the thunderstorm, stop working with the unit if necessary.



- Illuminate the work area sufficiently.
- Be careful with wet, frozen or dirty building materials.

2.4 Function Control

2.4.1 General



- Before every usage of the device check the functions and the working condition.
- Maintenance and lubrication are only permitted when device is shut down!



- Do not use the device, until all faults which can cause safety hazards are removed.
- If there are any cracks, splits or damaged parts on any parts of the device, immediately stop using it.



- The operating instructions must be available at the workplace every time.
- Do not remove the type plate of the machine.
- Unrecognisable information signs (such as regulatory or prohibition signs) must be replaced.

2.5 Definition skilled worker / specialist

Only skilled workers or specialists are allowed to carry out the installation-, maintenance-, and repair work on this device!

Skilled workers or specialists must have for the following points (if it applies for this device), the necessary professional knowledge.

- for mechanic
- for hydraulics
- for pneumatics
- for electrics

2.6 Authorized use



The unit is only suitable for cutting concrete paving stones, concrete slabs and other suitable concrete parts.



Unauthorized modifications to the device or the use of any additional devices you may have built yourself endanger life and limb and are therefore strictly forbidden!



- The device is only designed for the use specified in this documentation.
- Every other use is not authorized and is forbidden!
- All relevant safety regulations, corresponding legal regulations, and additional local health and safety regulations have to be observed.



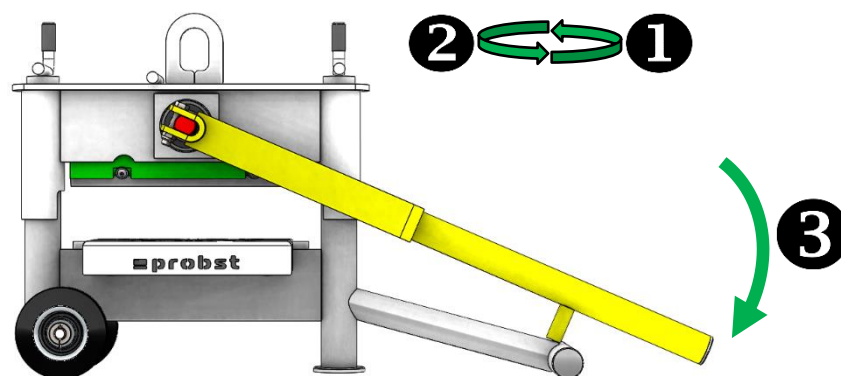
Prior to every operation the user must ensure that:

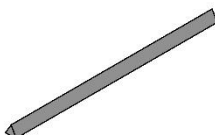
- the equipment is suited to the intended operation, the functioning and the working condition of the equipment is examined, and the load is suitable to be handled.

Any doubts about instructions should be raised with the manufacturer prior to use.

3 Models

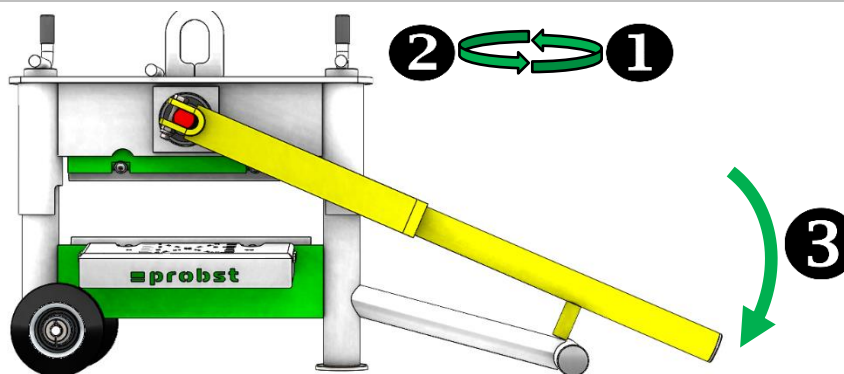
STS-33

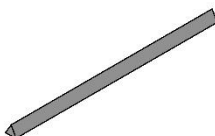


Type knife	Stone size	Application	Weight	Order number
 Triangular knife	Width: 330mm Height: 10-120mm	Material: Concrete <ul style="list-style-type: none"> • Paving stones • Plates 	approx. 41 Kg	51200075

- 1) Adjustment to the desired stone height is convenient and quick via the two smooth-running hand cranks (blade should only touch workpiece minimally)
- 2) Turn the cranks back by half a turn so that there is a minimum gap between the blade and the Workpiece is created (turn both cranks up/down simultaneously to avoid jamming).
- 3) By pressing down the lever the stone / plate is cut through

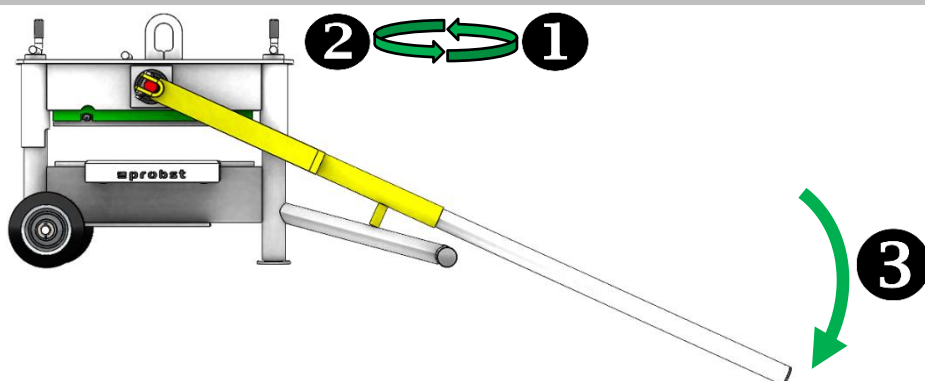
STS-33-F

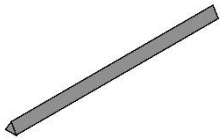


Type knife	Stone size	Application	Weight	Order number
 Triangular knife	Width: 330mm Height: 10-120mm	Material: Concrete <ul style="list-style-type: none"> • Paving stones • Plates 	approx. 41 Kg	51200076

- 1) Adjustment to the desired stone height is convenient and quick via the two smooth-running hand cranks (blade should only touch workpiece minimally)
- 2) Turn the cranks back by half a turn so that there is a minimum gap between the blade and the Workpiece is created (turn both cranks up/down simultaneously to avoid jamming).
- 3) By pressing down the lever the stone / plate is cut through

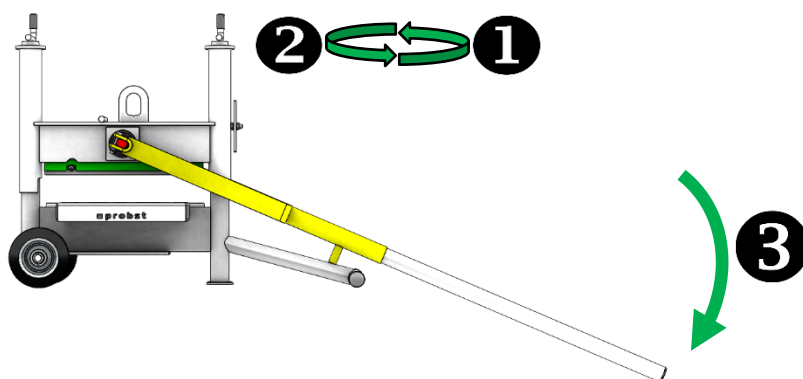
STS-43

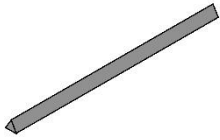


Type knife	Stone size	Application	Weight	Order number
 Triangular knife	Width: 430mm Height: 10-120mm	Material: Concrete <ul style="list-style-type: none"> • Paving stones • Plates 	approx. 57 Kg	51200077

- 1) Adjustment to the desired stone height is convenient and quick via the two smooth-running hand cranks (blade should only touch workpiece minimally)
- 2) Turn the cranks back by half a turn so that there is a minimum gap between the blade and the Workpiece is created (turn both cranks up/down simultaneously to avoid jamming).
- 3) By pressing down the lever the stone / plate is cut through

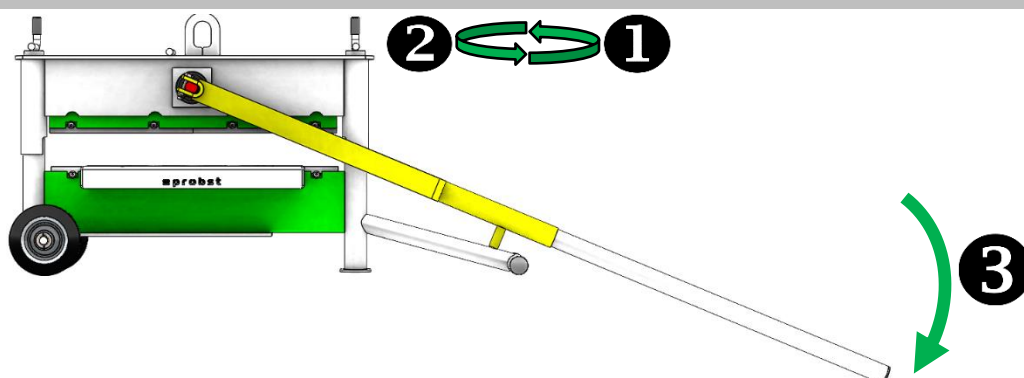
STS-43-H

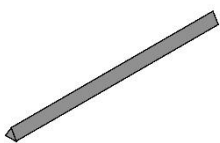


Type knife	Stone size	Application	Weight	Order number
 Triangular knife	Width: 430mm Height: 10-300mm	Material: Concrete <ul style="list-style-type: none"> • Paving stones • Plates 	approx. 66 kg	51200078

- 1) Adjustment to the desired stone height is convenient and quick via the two smooth-running hand cranks (blade should only touch workpiece minimally)
- 2) Turn the cranks back by half a turn so that there is a minimum gap between the blade and the Workpiece is created (turn both cranks up/down simultaneously to avoid jamming).
- 3) By pressing down the lever the stone / plate is cut through

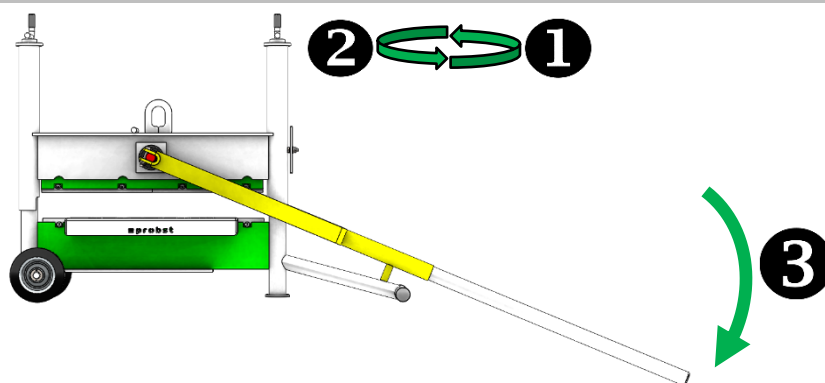
STS-65

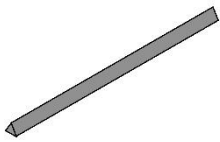


Type knife	Stone size	Application	Weight	Order number
 2x triangular knife	Width: 650mm Height: 10-120mm	Material: Concrete <ul style="list-style-type: none"> • Paving stones • Plates 	approx. 88 Kg	51200079

- 4) Adjustment to the desired stone height is convenient and quick via the two smooth-running hand cranks (blade should only touch workpiece minimally)
- 5) Turn the cranks back by half a turn so that there is a minimum gap between the blade and the Workpiece is created (turn both cranks up/down simultaneously to avoid jamming).
- 6) By pressing down the lever the stone / plate is cut through

STS-65-H



Type knife	Stone size	Application	Weight	Order number
 2x triangular knife	Width: 650mm Height: 10-400mm	Material: Concrete <ul style="list-style-type: none"> • Paving stones • Plates 	approx. 98 kg	51200080

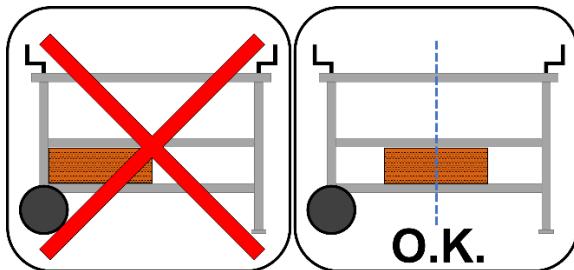
- 7) Adjustment to the desired stone height is convenient and quick via the two smooth-running hand cranks (blade should only touch workpiece minimally)
- 8) Turn the cranks back by half a turn so that there is a minimum gap between the blade and the Workpiece is created (turn both cranks up/down simultaneously to avoid jamming).
- 9) By pressing down the lever the stone / plate is cut through

3.1 Model overview / Technical data

Type	Separation width	Separating height	Dead weight	Order no.
STS-33	330 mm	10-120 mm	approx. 41 Kg	51200075
STS-33-F	330 mm	10-120 mm	approx. 41 Kg	51200076
STS-43	430 mm	10-120 mm	approx. 57 Kg	51200077
STS-43-H	430 mm	300 mm	approx. 66 kg	51200078
STS-65	650 mm	10-120 mm	approx. 88 Kg	51200079
STS-65-H	650 mm	400 mm	approx. 98 kg	51200080

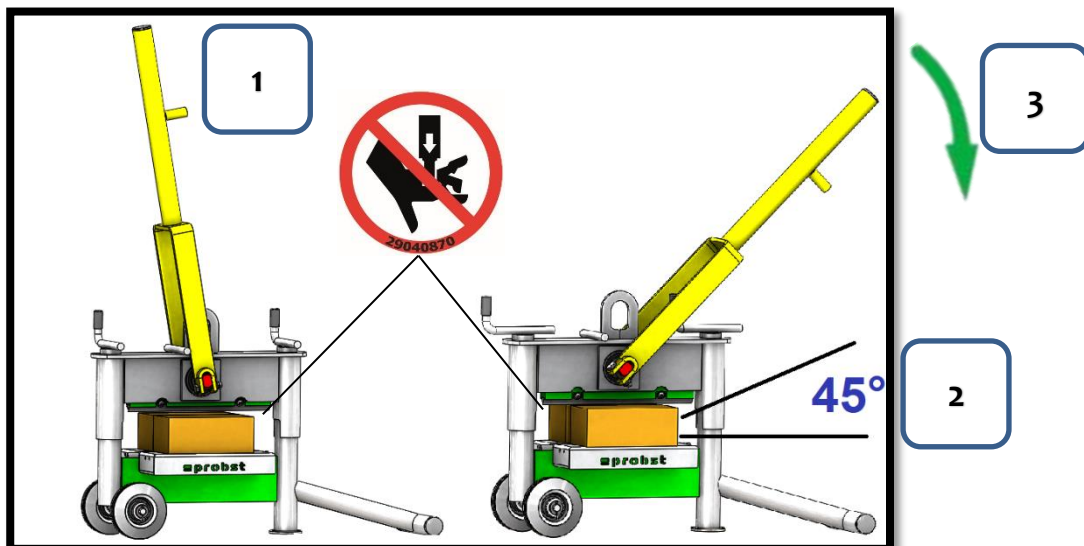
4 Operation

4.1 Splitting stones in the middle



Splitting stones centrally in the machine

4.2 Device operation



- 1.) Bring the appliance to the correct height (blade distance to the material to be cut 1-5 mm)
- 2.) Observe angle and contact surface
- 3.) Press lever down to split the material to be cut

5 Maintenance and care

5.1 Maintenance



To ensure the correct function, safety and service life of the device the following points must be executed in the maintenance interval.

Used **only original spare parts**, otherwise the warranty expires.



All operations may only be made in closed state of the device!

For all operations you have to make sure, that the device will not close unintended. **Danger of injury!**

MAINTENANCE DEADLINE	Auszuführende Arbeiten
Daily	<ul style="list-style-type: none"> Clean the unit from stone dust.
Monthly	<ul style="list-style-type: none"> Turn or replace the knives if necessary. One knife has three cutting edges and can therefore be used three times. See also exploded view in the appendix Activities: <ul style="list-style-type: none"> Loosen fastening screws Turn knife 120° or replace it Tighten the fastening screws
Monthly	<ul style="list-style-type: none"> Check the unit for wear and damage

5.2 Repairs



Only persons with the appropriate knowledge and ability are allowed to repair the device.

Before the device is used again, it has to be checked by an expert.

5.3 Hints to the type plate



Type, serial-number and production year are very important for the identification of your device. If you need information to spare-parts, warranty or other specific details please refer to this information's.

The maximum carrying capacity/working load limit (WLL) is the maximum load which can be handled with the device. **Do not exceed** this carrying capacity/working load limit (WLL).

If you use the device in combination with other lifting equipment (Crane, chain hoist, forklift truck, excavator) consider the deadweight of the device.

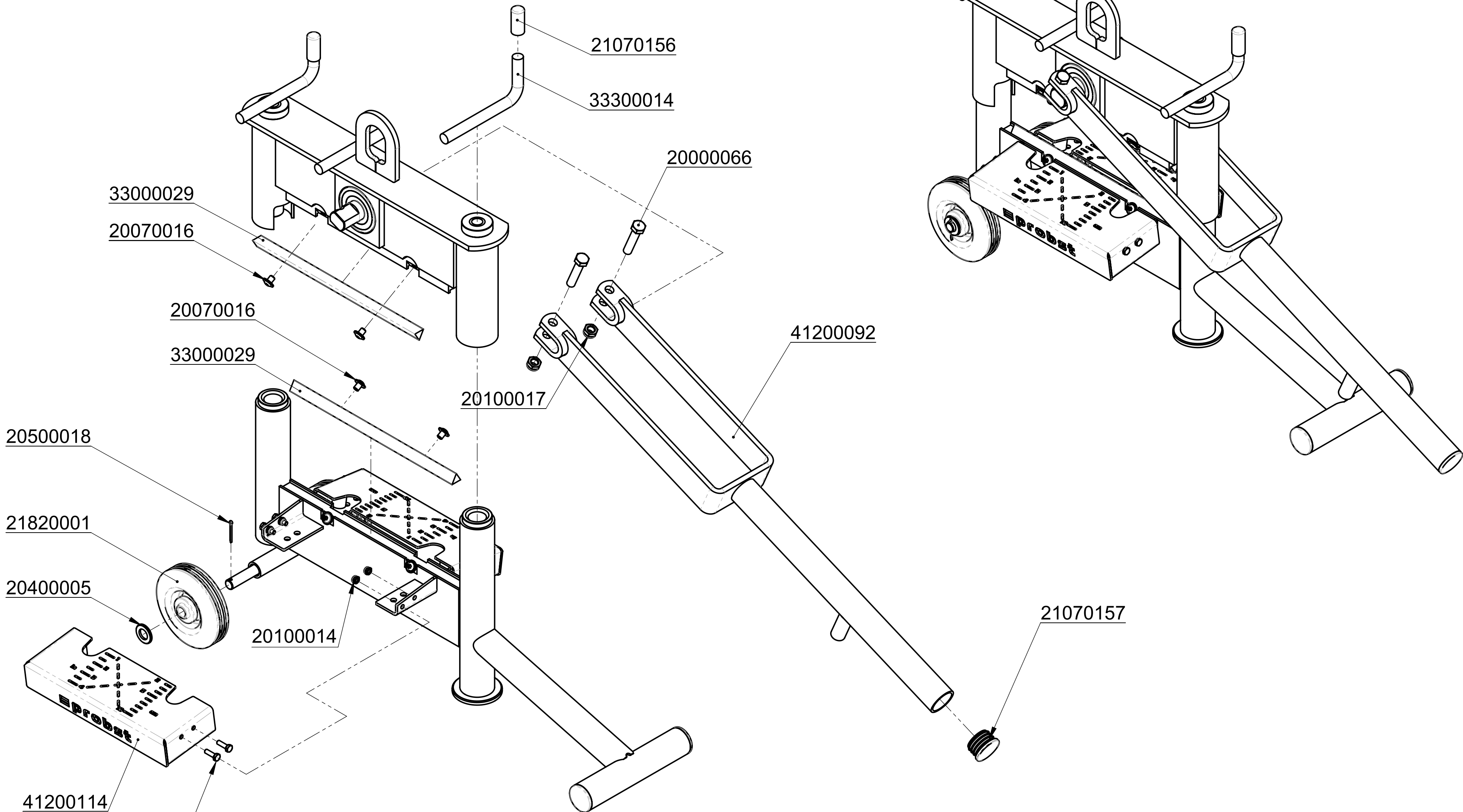


Example:

5.4 Hints to the renting/leasing of PROBST devices



With every renting/leasing of PROBST devices the original operating instructions must be included unconditionally (in deviation of the user's country's language, the respective translations of the original operating instructions must be delivered additionally)!



© all rights reserved conform to ISO 16016

Datum	Name
Erst. 13.10.2020	R.Seidel
Gepr. 13.10.2020	R.Seidel

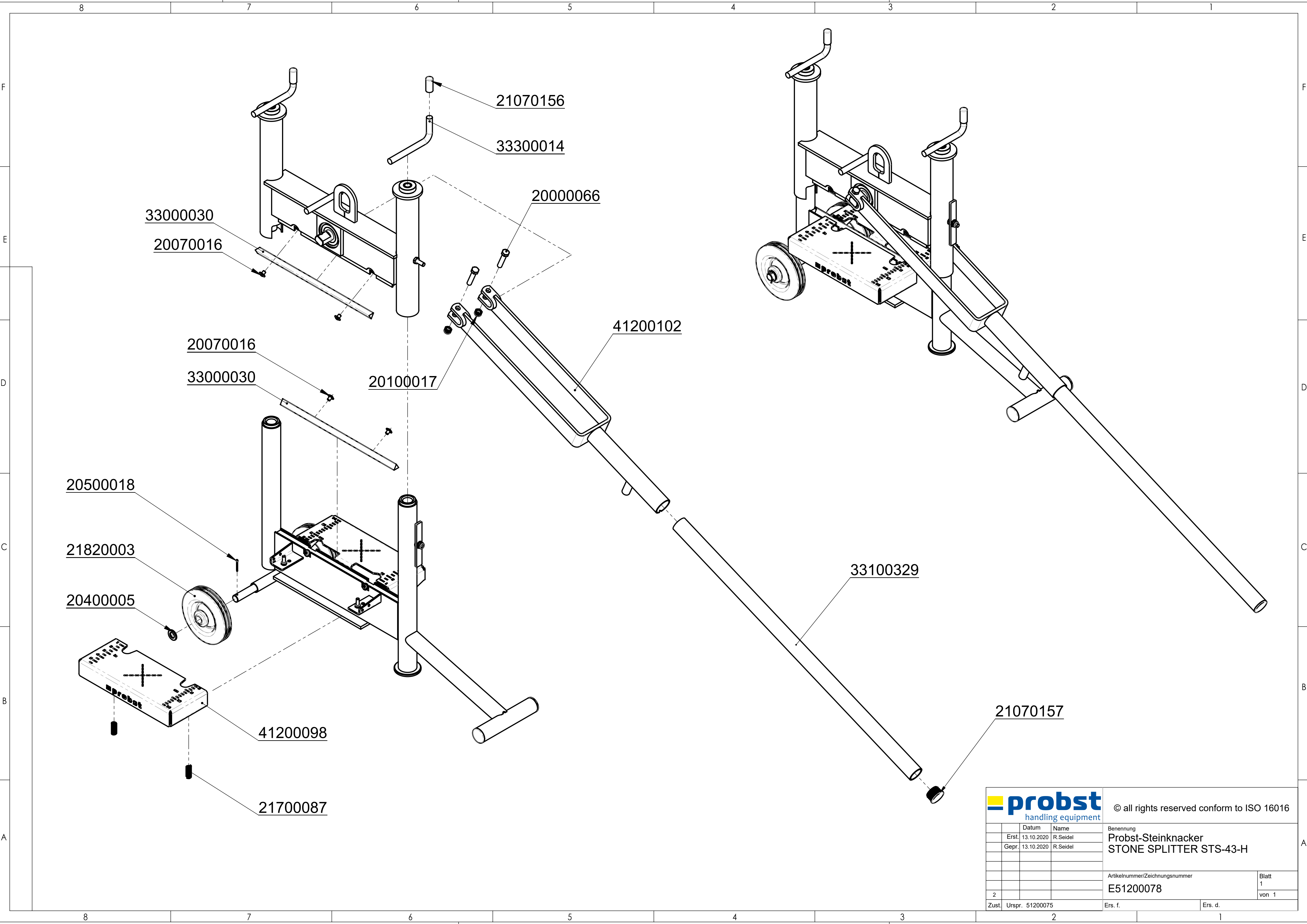
Benennung
**Probst-Steinknacker
STONE SPLITTER STS-33-F**

Zust.	Urspr.
2	

Artikelnummer/Zeichnungsnummer
E51200076

Blatt
1
von 1

Ers. f. Ers. d.



© all rights reserved conform to ISO 16016

Datum		Name	Benennung	
Erst.	13.10.2020	R.Seidel	Probst-Steinknacker STONE SPLITTER STS-43-H	
Gepr.	13.10.2020	R.Seidel		
			Artikelnummer/Zeichnungsnummer	
			E51200078	
			Blatt 1 von 1	
Zust.	Urspr. 51200075		Ers. f.	Ers. d.

A51200075 STS-33 / A51200076 STS-33-F A51200077 STS-43 / A51200078 STS-43-H A51200079 STS-65 / A51200080 STS-65-H

