



Operating Instructions

Translation of original operating instructions

Pallet Fork PW-III

PW-III



ULTIMATE
LIFTING SOLUTIONS

TEL: 01384 986 026
WWW.ULSLIFTING.COM



Please note that the product may not be used / put into operation without these operating instructions in the national language. If you did not receive operating instructions in your national language with the delivery of the product, please contact us. In countries of the EU / EFTA we will send them to you free of charge. For countries outside the EU / EFTA, we will be pleased to provide you with an offer for an operating manual in the national language if the translation cannot be organised by the dealer/importer.

Contents

1	EC-Declaration of Conformity / UKCA-Declaration of Conformity	1.2
2	General.....	2.3
2.1	Authorized use.....	2.3
2.2	Survey and construction	2.4
2.3	Technical Data..... Fehler! Textmarke nicht definiert.	
2.4	Technical Characteritics.....	2.4
2.5	Technical data	2.4
3	Safety	3.5
3.1	Safety symbols.....	3.5
3.2	Safety Marking.....	3.5
3.3	Definition skilled worker / specialist	3.5
3.4	Personal safety requirements	3.6
3.5	Protective equipment.....	3.6
3.6	Accident prevention	3.6
3.7	Function Control	3.6
3.7.1	General	3.6
4	Adjustments and operating	7
4.1	Adjustments.....	7
4.2	Operating	8
4.2.1	Filling Hydraulic Oil.....	8
5	Maintenance and care	9
5.1	Maintenance	9
5.1.1	Mechanics	9
5.2	Trouble shooting	10
5.3	Repairs	10
5.4	Safety procedures	11
5.5	Hints to the type plate.....	12
5.6	Hints to the renting/leasing of PROBST devices	12
6	Disposal / recycling of devices and machines	12

We hereby reserve the right to make changes to the information and illustrations in the operating instructions.

1 EC-Declaration of Conformity / UKCA-Declaration of Conformity

Description: Pallet Fork PW-III
Type: PW-III
Order number: 51100011

Manufacturer: Probst GmbH
Gottlieb-Daimler-Straße 6
71729 Erdmannhausen, Germany
info@probst-handling.de
www.probst-handling.com



Importer: Probst Ltd
Unit 2 Fletcher House
Stafford Park 17
Telford Shropshire TF3 3DG, United Kingdom
www.probst-handling.co.uk
sales@probst-handling.co.uk



The machine described above complies with the relevant requirements of the following EU directives:
The object of the declaration described above is in conformity with the relevant UK-Regulations and UK-Guidelines:

EC-machinery directive 2006/42/EC (Reference: OJ L 157, 09.06.2006)

UK-Regulation: Supply of Machinery (Safety) Regulations 2008 (SI 2008 No. 1597)

The following standards and technical specifications were used:

DIN EN ISO 12100

Safety of machinery - General principles for design - Risk assessment and risk reduction

UK-Regulation: BS EN ISO 12100-1:2003+A1:2009

DIN EN ISO 13857

Safety of machinery - safety distances to prevent hazard zones being reached by upper and lower limbs.

UK-Regulation: BS EN ISO 13857:2019

Authorized person for EC-documentation:

Name: Jean Holderied

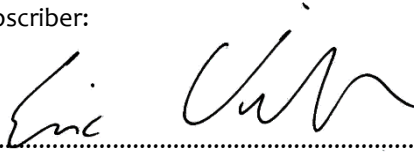
Address: Probst GmbH; Gottlieb-Daimler-Straße 6; 71729 Erdmannhausen, Germany

Authorized person for UK-documentation:

Name: Nigel Hughes

Address: Probst Ltd ; Unit 2 Fletcher House; Stafford Park 17; Telford Shropshire TF3 3DG, United Kingdom

Signature, information to the subscriber:

Erdmannhausen, 01.02.2023.....
(Eric Wilhelm, Managing director)

2 General

2.1 Authorized use

The device pallet cart (PW-III) exclusively suitable for transporting of stone slabs (on pallets) on a building site (on even ground). Underride the pallets sidewise.

The device (PW-III) may **only** be used on sloping locations with **not more than 15°** (slope) and if the conditions on the area allows a safety handling with this device.

The ground must be able to carry the full weight.

The device (PW-III) can set by itself on sloping locations and cause considerable damages, if it is not sufficiently fixed.



The permissible working load limit (WLL) must not be exceeded.



The device (PW-III) is equipped with **no parking brake**.
For this reason it is absolutely necessary that the device is fixed with sloping location additionally with **brake blocks**.



When lowering the load pay attention. Danger of squeezing the feet!
Therefore, always keep distance. In particular, children are at risk.



NOT ALLOWED ACTIVITIES:

Unauthorized alterations of the device and the use of any self-made additional equipment could cause danger and are therefore **forbidden!**

Never exceed the **carrying capacity/working load limit (WLL)** and the **nominal width/nominal size** of the device.

All unauthorized transportations with the device **are not allowed:**

- Transportation of people and animals.
- Transportation of other loads and materials than described in this manual.
- Never suspend any goods with ropes, chains or similar at the device.



- The device is only designed for the use specified in this documentation.
- Every other use is not authorized and is forbidden!
- All relevant safety regulations, corresponding legal regulations, especially regulations of the declaration of conformity, and additional local health and safety regulations must be observed.



Prior to every operation the user **must** ensure that:

- The equipment is suited to the intended operation
- the functioning and the working condition of the equipment is examined
- the load is suitable to be handled.

Any doubts about instructions should be raised with the manufacturer prior to use.

2.2 Survey and construction



1	Handle
2	Lever for lifting cylinder
3	Fork legs (adjustable)

Fig. 1

2.3 Technical Characteristics

Maximum Load Height:		Maximum Pallet Width:	Width:	Lenght:	Height:
200 mm		1263 mm	1615 mm	1400 mm	800 mm
Tyre pressure:		Hydraulic oil volume:		Types of oil:	
Large	3,5 kg/cm ² (min. 2,7 / max. 3 bar	Cylinder blue/black	0,5 l	SAE 10 Hydra; SHELL Tellus Oil 37; HOUGHTON HD 22,5	
Small	2 kg/cm ²	Cylinder grey	0,3 l		

2.4 Technical data

The exact technical data (carrying capacity / working load limit (WLL), dead weight, etc.) are listed on the type plate.

3 Safety

3.1 Safety symbols



Danger to life!

Identifies imminent hazard. If you do not avoid the hazard, death or severe injury will result.



Hazardous situation!

Identifies a potentially hazardous situation. If you do not avoid the situation, injury or damage to property can result.



Prohibition!


Identifies imminent a prohibition. If you do not avoid the prohibition, death and severe injury, or damage to property will result.




Important informations or useful tips for use.

3.2 Safety Marking

WARNING SIGN

Symbol	Meaning	Order-No.	Size
	Danger of squeezing the hands.	29040221	30 x 30 mm
		29040220	50 x 50 mm
		29040107	80 x 80 mm

REGULATORY SIGN

Symbol	Meaning	Order-No.	Size
	Each operator must have read and understood the operating instructions (and all safety instructions).	29040665	Ø 30 mm
		29040666	Ø 50 mm
		29041049	Ø 80 mm

3.3 Definition skilled worker / specialist

Only skilled workers or specialists are allowed to carry out the installation-, maintenance-, and repair work on this device!

Skilled workers or specialists must have for the following points (if it applies for this device), the necessary professional knowledge.

- for mechanic
- for hydraulics
- for pneumatics
- for electrics

3.4 Personal safety requirements



Each operator must have read and understood the operating instructions (and all safety instructions). Only qualified, authorized personal is allowed to operate the device and all devices which are connected (lifting device/carrier).



The **manual guiding** is **only** allowed for devices **with handles**.
Otherwise there is a risk of injury to the hands!

3.5 Protective equipment

The protective equipment must consist, according to the safety regulations of the following parts:

- Protective clothing
- Safety gloves
- Safety shoes

3.6 Accident prevention



- The workplace has to be covered for unauthorized persons, especially children.
- **Caution at thunderstorm - danger of lightning!**
Depending on the intensity of the thunderstorm, stop working with the device if necessary.



- The workplace must be sufficiently illuminated.
- **Be careful with wet, frozen, iced and dirty building materials! There is a danger of the gripping material slipping out. → DANGER OF ACCIDENT!**

3.7 Function Control

3.7.1 General



- Before every usage of the device check the functions and the working condition.
- Maintenance and lubrication are only permitted when device is shut down!



- Do not use the device, until all faults which can cause safety hazards are removed.
- If there are any cracks, splits or damaged parts on any parts of the device, immediately stop using it.



- The operating instructions must be available at the workplace every time.
- Do not remove the type plate of the machine.
- Unrecognisable information signs (such as regulatory or prohibition signs) must be replaced.

4 Adjustments and operating

4.1 Adjustments

- Before using the device (PW-III) adjust the forks (3) according to the corresponding distance.
- The forks (3) are displaceable and can so be adjusted stepless.

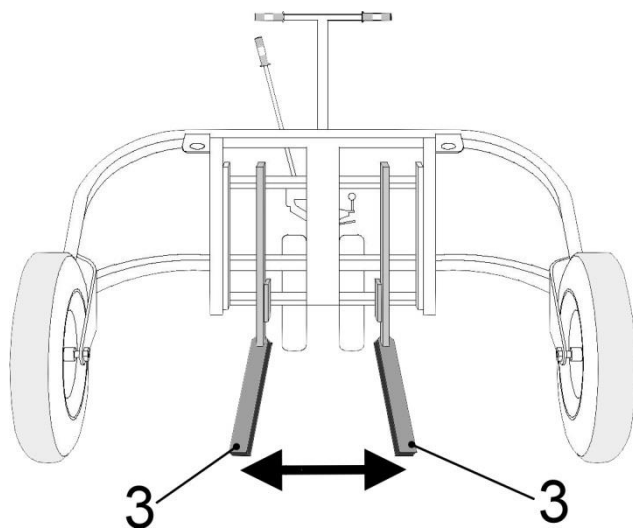


Abb. 1

3	Forks
---	-------

4.2 Operating

- For a slowly lowering of the forks (3) activate the lever II at the hydraulic cylinder anti-clockwise.
- As soon as the forks (3) are lowered adequate, the PW-III can be positioned under the pallet.
- To raise the load (pallet) move the elevating lever I from position 1 to position 2 and the back again until the required height is reached (maximum height 200 mm).
Regard, that this action only occur lever II should be in position 1 for it to work correctly.
- Transport the device (PW-III) with the pallet to the place of destination and lower the pallet slowly, by opening (anti clockwise) the hydraulic lever II.



When lowering the load pay attention. Danger of squeezing the feet! Therefore, always keep distance. In particular, children are at risk.



The device (PW-III) is equipped with **no parking brake**.

For this reason it is absolutely necessary that the device is fixed with sloping location additionally with **brake blocks**.

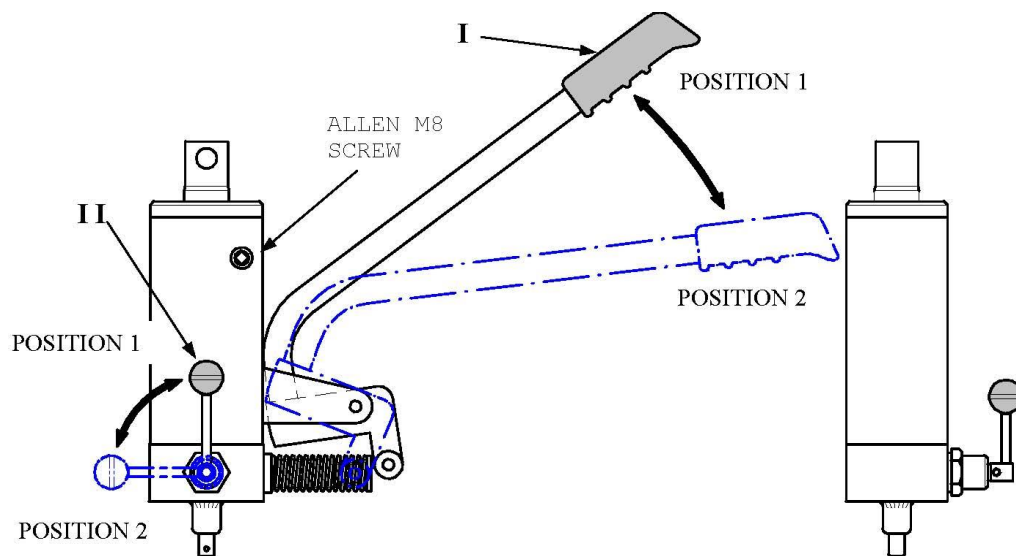


Fig. 2



- Lower the device (PW-III) Regard, when it is not in operation - to raise the lifetime of the hydraulic.

4.2.1 Filling Hydraulic Oil

If the oil cylinder needs to be topped up, the following steps should be followed:

- Lower the forks (37Fig.1) of the Pallet Truck by turning the lever II anti-clockwise.
- Loosen the **Allen M8 screw** situated on the cylinder (see Fig.2) and top up the oil through the hole until it overflows.

5 Maintenance and care

5.1 Maintenance



To ensure the correct function, safety and service life of the device the following points must be executed in the maintenance interval.

Used **only original spare parts**, otherwise the warranty expires.

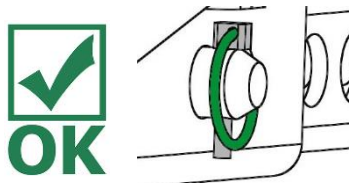


All operations may only be made in unpressurised, electro less and closed state of the device!

5.1.1 Mechanics

MAINTENANCE PERIOD	Work to be carried out
Initial inspection after 25 operating hours	<ul style="list-style-type: none"> Check or retighten all fixing screws (may only be carried out by a qualified person).
Every 50 operating hours	<ul style="list-style-type: none"> Retighten all fixing screws (make sure that the screws are retightened according to the valid tightening torques of the corresponding strength classes). Check all existing safety elements (such as folding pins) for proper function and replace defective safety elements. → 1) Check all joints, guides, pins and sprockets, chains for proper function, readjust or replace if necessary. Check gripper jaws (if present) for wear and clean, replace if necessary. All existing sliding guides, rack gears and joints of moving parts or machine components must be greased / lubricated to reduce wear and for optimum movement sequences (recommended grease: Mobilgrease HXP 462). Lubricate all grease nipples (if present) with grease gun.
At least 1x per year (shorten the inspection interval in case of harsh operating conditions)	<ul style="list-style-type: none"> Inspection of all suspension parts, as well as bolts and brackets. Inspection for cracks, wear, corrosion and functional safety by an expert.

1)



5.2 Trouble shooting

ERROR	CAUSE	REPAIR
The pallet cart cannot be raised	Valve is opened	Close valve (lever II)
The pallet cart cannot be lowered	Valve defective	Check valve (lever II) and exchange it if necessary.
The pallet cart is difficult controllable.	Steering bearing is defective. Tyre pressure is to low.	Check the steering bearing. Check tyre pressure.

5.3 Repairs



Only persons with the appropriate knowledge and ability are allowed to repair the device.
Before the device is used again, it has to be checked by an expert.

5.4 Safety procedures



- It is the contractor’s responsibility to ensure that the device is checked by an expert in periods of max. 1 year and all recognized errors are removed (→ DGUV norm 100-500).
- The corresponding legal regulations and the regulations of the declaration of conformity must be observed!
- The expert inspection can also be done by the manufacturer Probst GmbH.
Contact us at: service@probst-handling.de
- We recommend affixing the inspection sticker "„Sachkundigenprüfung / Expert inspection" in a clearly visible place (order no.: 2904.0056+Tüv sticker with year number) after the inspection has been done.



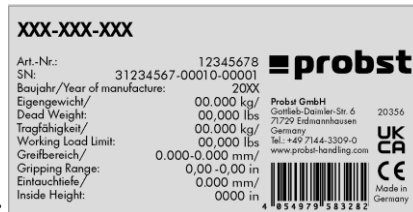
The check by an expert must be proved!

Device	Year	Date	Expert	Company

5.5 Hints to the type plate



- Type, serial-number and production year are very important for the identification of your device. If you need information to spare-parts, warranty or other specific details please refer to this information's.
- The maximum carrying capacity/working load limit (WLL) is the maximum load which can be handled with the device. **Do not** exceed this carrying capacity/working load limit (WLL).
- If you use the device in combination with other lifting equipment (Crane, chain hoist, forklift truck, excavator) consider the deadweight of the device.



Example:

5.6 Hints to the renting/leasing of PROBST devices



With every renting/leasing of PROBST devices the **original operating instructions must be included** unconditionally (in deviation of the user's country's language, the respective translations of the original operating instructions must be delivered additionally):

6 Disposal / recycling of devices and machines



The product **may only** be taken out of service and prepared for disposal / recycling by qualified personnel. Correspondingly existing **single components** (such as metals, plastics, liquids, batteries/rechargeable batteries etc.) **must** be disposed of/recycled in accordance with the nationally/country-specific applicable laws and **disposal regulations!**



The product must not be disposed of in household waste!

Proof of maintenance



Warranty claim for this machine only apply for performance of the mandatory maintenance works (by an authorised specialist workshop)! After each completed performance of a maintenance interval the included form must be fill out, stamped, signed and send back to us immediately ¹⁾.

1) via e-mail to service@probst-handling.de / via fax or post

Operator: _____

Device type: _____

Device-No.: _____

Article -No.: _____

Year of make: _____

First inspection after 25 operating hours

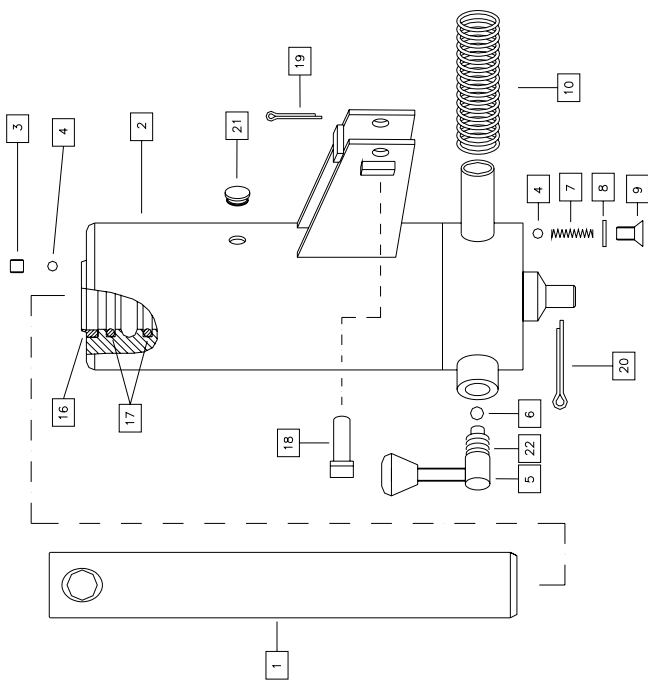
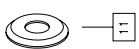
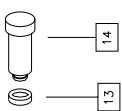
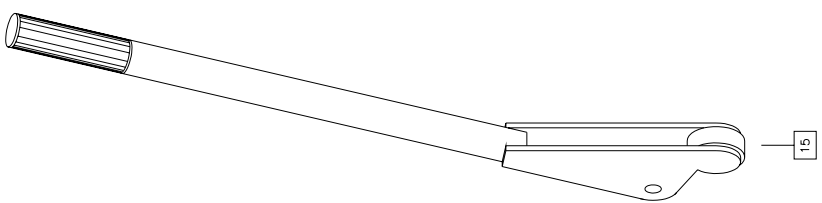
Date:	Maintenance work:	Inspection by company:
		Company stamp
	
		Name Signature

All 50 operating hours

Date:	Maintenance work:	Inspection by company:
		Company stamp
	
		Name Signature
		Company stamp
	
		Name Signature
		Company stamp
	
		Name Signature

Minimum 1x per year

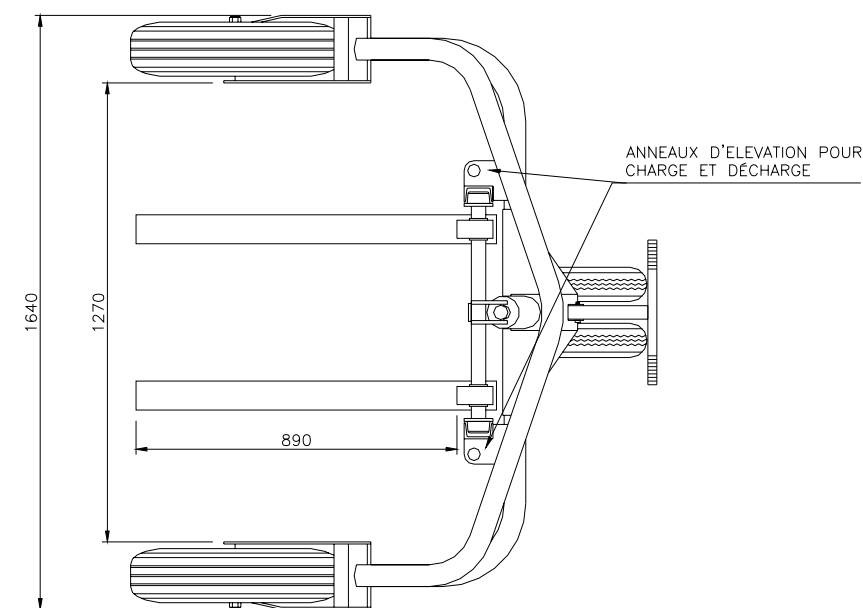
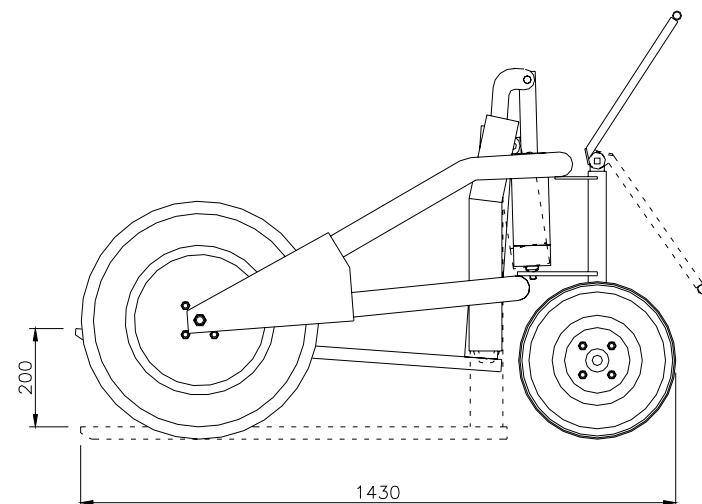
Date:	Maintenance work:	Inspection by company:
		Company stamp
	
		Name Signature
		Company stamp
	
		Name Signature



PIECES DE HYDRAULIQUE DE TRANSPALETTE

N°	CODE	DESIGNATION
1	030800	Piston
2	030100	Corps hydraulique
3	032100	Vis
4	031400	Bille 6 mm.
5	030400	Clé Descente
6	031300	Bille 8 mm.
7	031200	Ressort
8	031900	Rondelle
9	032000	Vis
10	031100	Ressort
11	030900	Protecteur
12	031000	Collier
13	031700	Joint O.R.
14	030300	Pistón de pompage
15	030200	Barre
16	031800	Racloir
17	031500	Joint
18	032300	Goujon
19	100000	Goupille
20	110000	Goupille
21	032200	Bouchon
22	031600	Joint

CHARACTERISTIQUES TECHNIQUES



CHARGE MAXIMUN: 1.500 kg.

PIECES DE TRANSPALETTE H-2

N°	CODE	DESIGNATION
1	360000	Anneau Ø18
2	090000	Goujon Ø18
3	300000	Galet
4	020000	Ensemble fourche
5	030000	Hydraulique
6	110000	Goupille 5x50
7	100000	Goupille 3x30
8	320000	Support timon
9	060000	Timon
10	032300	GoujonØ10
11	160000	Ecrou M-12
12	180000	Vis 12x30
13	010000	Chassis H-2
14	280000	Roue 155-13"
15	220001	Moyeux Asier H-2
16	330000	Bague auto-lubrifiant
17	040000	Axe direction
18	200000	Anneau Ø25
20	270000	Roue 3.50-8"
21	050000	Axe H-2
22	190000	Ecrou autobloq. M-18
23	260000	Bague separateur
24	340000	Bague auto-lubrifiant avec bord

